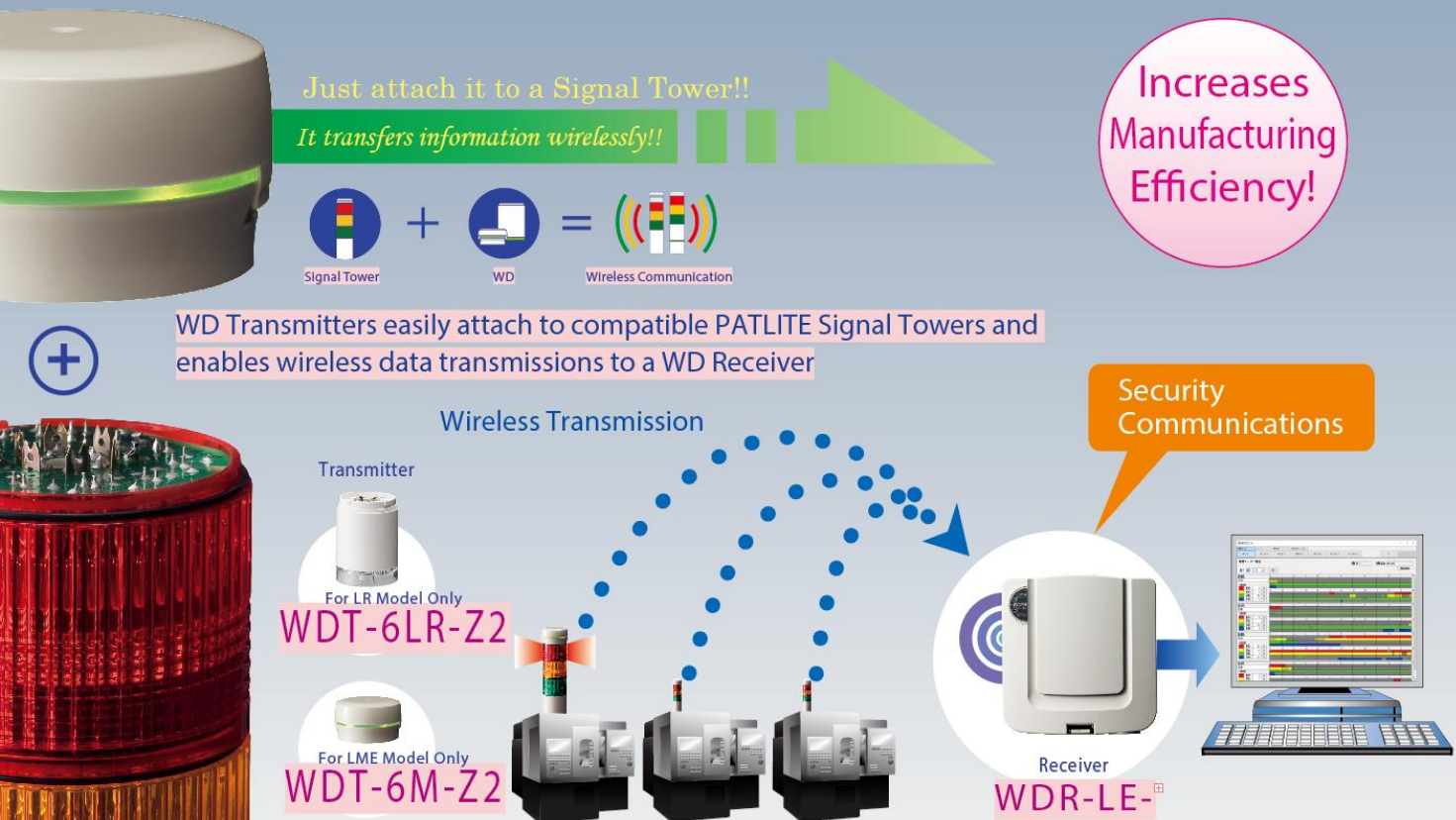


The operating conditions of production equipment in a factory can be grasped in real-time by mounting (replacing) **PATLITE WD** to the equipment, so that abnormality of the equipment can be monitored and efficiency of preventive maintenance can be enhanced.

### System configuration



### System overview

#### [Main functions]

Function name	Function overview
History Chart view	Information gathered from a factory, building, line, or equipment set by a master in advance can be monitored around the clock.
Real-time View	Whether multiple pieces of equipment in a factory, building, or line set by a master in advance is normal or abnormal can be visualized.
CSV Download	Data on daily and monthly reports can be output in CSV format so that the user can create Excel files.
Option Functions	Email Alert, Message board output, Daily Report/Monthly Report, Equipment Monitoring, History Chart view (Web), Real-time View (Web), etc.

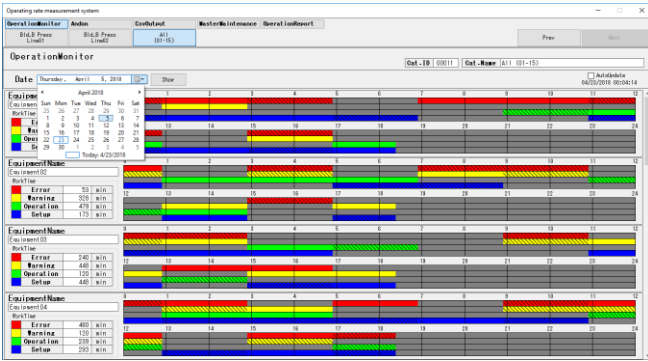
#### [Information gathered (example)]

- Installation error, warning, normal operation, production numbers, preparation time, etc.
- \*Information that can be gathered varies depending on the specifications of the equipment.

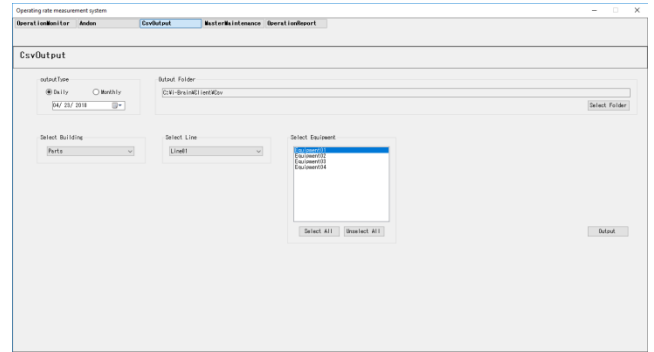
#### [Advantages of introduction]

- Preventive maintenance can be realized by controlling the operating time of the equipment.
- Information on daily and monthly reports can be downloaded in CSV format.
- The conditions of equipment can be monitored in real-time so that a quick response can be made in case of a failure.

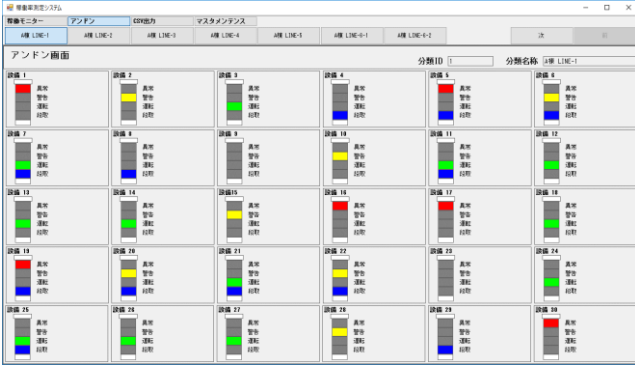
[History Chart view]



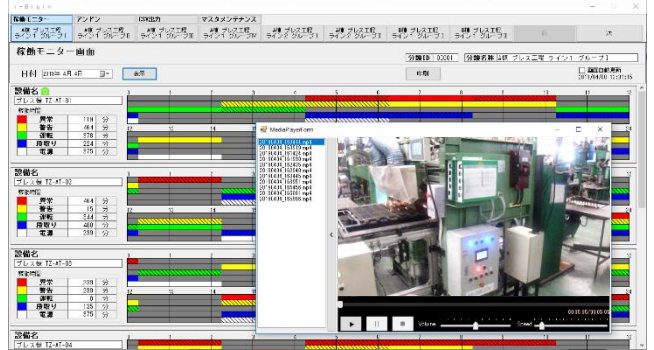
[CSV Download]



[Real-time View]



[Equipment Monitoring] \*Option



[Various functions by Web Server] \*Option



[Daily Report/Monthly Report] \*Option

稼働日	稼働時間	稼働率	異常発生時間	異常発生数	コメント
プレス機 T2-AT-01	02:37:34	24.7%	01:59:59	2回	
異常発生	00:59:59	0.0%	00:00:00	0回	
稼働率	03:59:59	37.6%	02:00:00	2回	
稼働率	03:59:59	37.6%	01:59:59	2回	

Cost for introduction and operating environment

■ Price

- Basic software 1 set . . . . . Please contact separately.
- Annual maintenance cost . . . . . Please contact separately.
- \*Can be estimated depending on the situation, such as whether a signal lamp is available.
- \*1. To estimate the cost, ICOMSOFT will conduct on-site survey to confirm whether measurement can be performed.
- \*2. Price of the control PC is not included.

■ Operating environment

- Supported OS: Server: Windows Server 2008 R2 SP1 or above  
Client: Windows 7 SP1 or above  
\*.NET Framework 4.6.1 (required)
- DB: PostgreSQL
- Memory: Server: 8 GB min. (recommended) Client: 4 GB min. (recommended)
- HDD: Server: 500 GB min. (recommended) Client: 100 GB min. (recommended)

 ICOMSOFT CO., LTD.



HEAD OFFICE  
1-1-36 Makiyama, Tobata-ku, Kitakyushu-City,  
Fukuoka 804-0053 Japan  
Tel:+81-93-871-8811 Fax:+81-93-871-8814  
E-mail :eigyo@icomsoft.co.jp



DHOWA TECHNOS (THAILAND) CO., LTD.

■ FA Solution Provider ■

HEAD OFFICE  
34 Soi Bangna Trad 34, Debaratna Road,  
Bangna Tai Sub-District, Bangna District,  
Bangkok 10260. Thailand.  
Tel.+66-(0)2-541-5410-12 Fax.+66-(0)2-541-5413  
E-mail :sales@dhowa-technos.co.th